

Software product family «**TouchInform**»<sup>©</sup>

## Installation manual

software product family «**TouchInform**»<sup>©</sup>

Version 2.0.1.534

Last modified on:

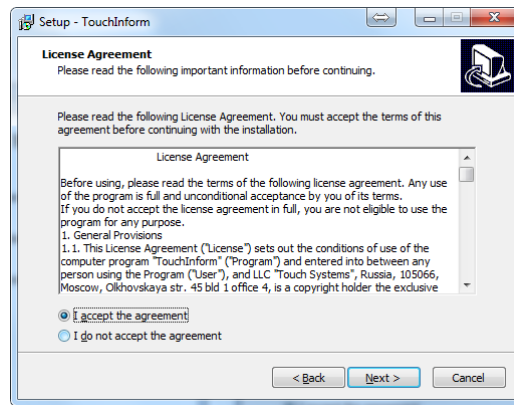
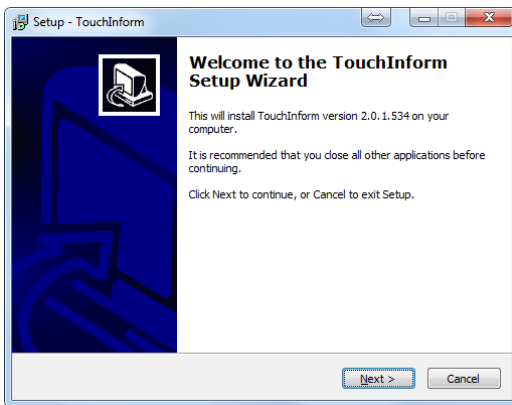
05.12.2014

Moscow, 2012-2014  
“Touch Systems” ltd.

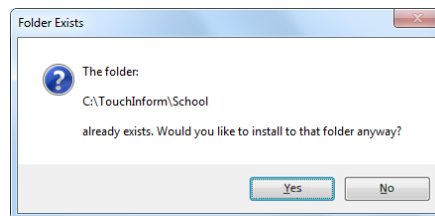
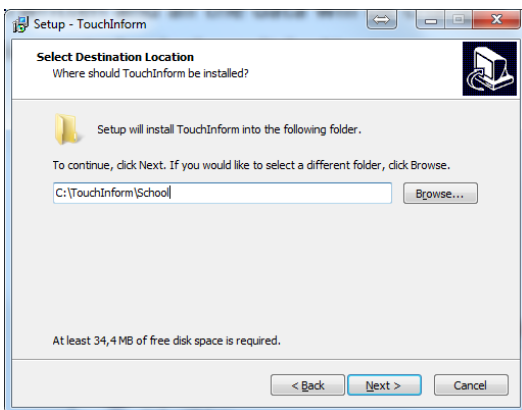
1. The software **TouchInform** is protected by patent law and the application code is protected against unauthorized copying. Your antivirus software may detect some of the modules considering them as a security threat. For normal completion of the installation process, please disable the antivirus on your computer for a certain time.
2. When you run the software installer, you will be asked to select the language of the dialogue conducted during the installation process (options: Russian, English).



3. Accept the license agreement, click **<Next>**.

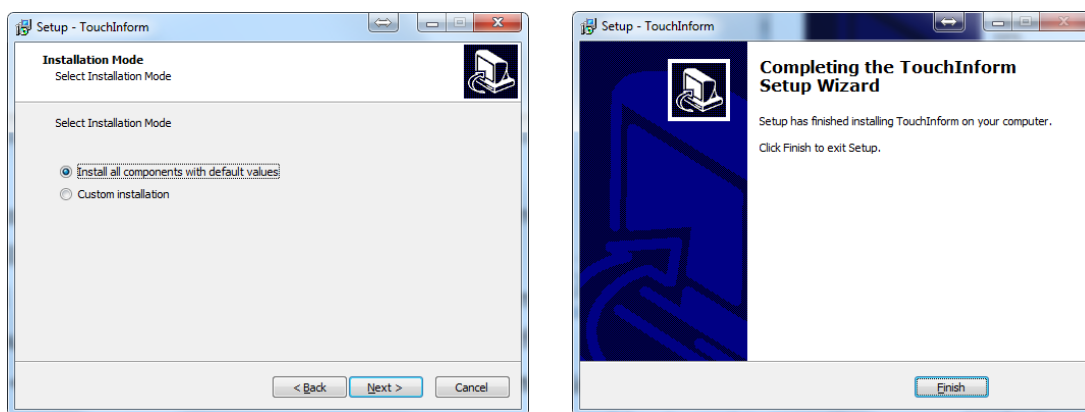


4. Select the directory for program installation. By default C:\TouchInform (you can choose any other name, for example C:\TouchInform\_Gos). If the folder, where the program will be installed, already exists on the computer, you'll be asked about installation to this folder. You can either accept the terms, clicking **<Yes>**, then the content of the existing folder will be overwritten and all the data will be changed, or clicking **<No>**, change the name of the installation folder (in previous window), then click **<Next>**.

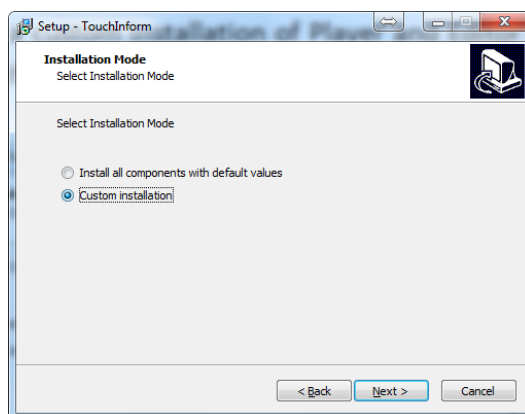


5. If you are installing the application with a lightweight version of the database server (LocalDB), other settings cannot be changed and all the components will be installed with default values.
6. If you are installing the database server Express Edition, in next window you'll be offered to install all components with default values or a custom installation of the components. In case of selecting the full installation mode, all the components will be installed, including the necessary Microsoft components. This installation mode should be selected if the software is installed for the first time

on this computer (on the touchscreen kiosk), click **<Next>** three times, then click **<Install>**. At the end of installation click **<Finish>**.

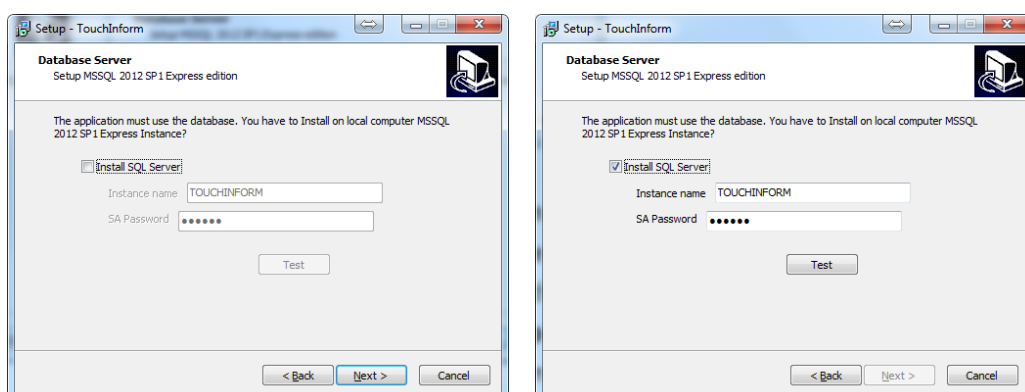


In case of a custom installation, you'll have an opportunity to select all the required components in the dialogue window. You should select this installation mode if it's not the first time of installation, in case of installing a new instance of SQL-server, new databases, reinstalling the existing databases, directory with the media files, as well as in case of a custom installation of Player and Editor or project download "on-the-fly", which was created earlier on a different computer, click **<Next>**.

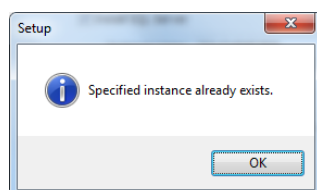


7. At the first stage of the custom installation you will be offered to install the **Database Server on a Local computer** (Microsoft SQL Server 2012 SP1 Express). **It's impossible to install the database server on another computer remotely!** The installation of the component can be omitted by clicking **<Next>**.

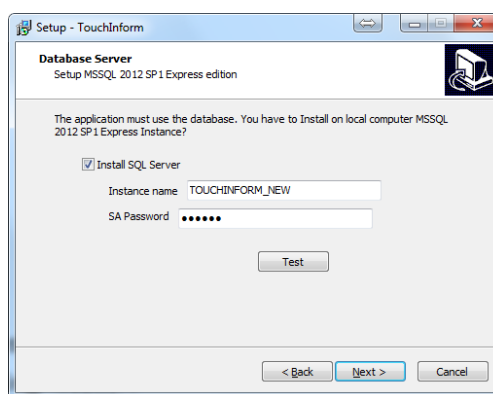
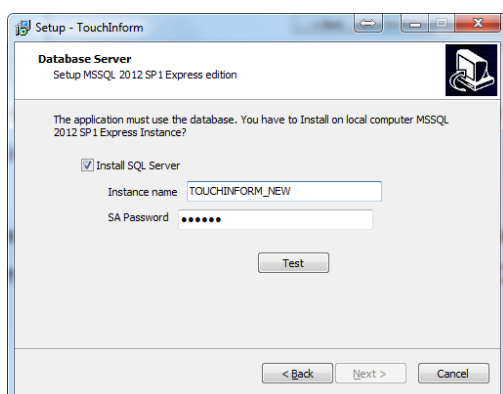
To install the **Database Server**, select the option **Install SQL Server** in relevant window. In this case, fields: Instance name (by default TOUCHINFORM) and Password of the SA-user become active. If you leave these fields unchanged and click **<Next>**, you will create an instance of the Database Server named TOUCHINFORM after the completion of the installation process. By default, the password for the user SA: touch@.



If you click **<Test>** before creating an instance of the database, the installation program will check whether the database server with the name, specified in the field, already exists on the local computer: **the Instance name**. If the server with this name already exists in the system, a window with the following message appears on the screen: **Specified instance already exists** and the installation process can be continued only after changing the name, the button **<Next>** will be inactive.

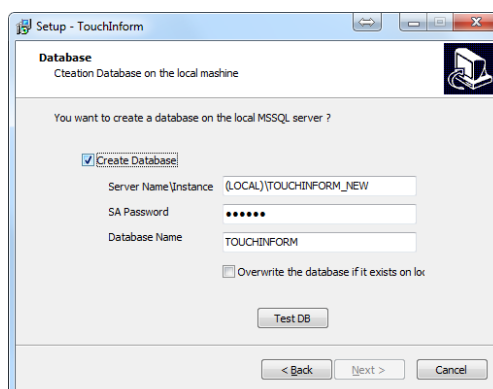
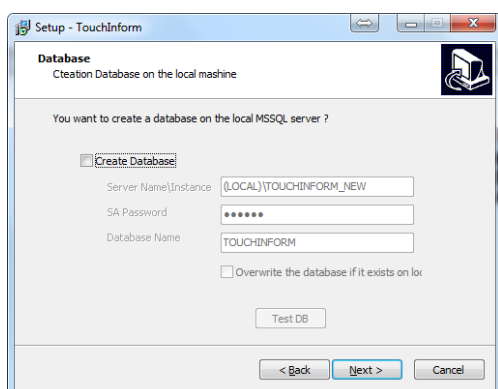


Introducing the new instance name in the field, for example TOUCHINFORM1, TOUCHINFORM\_NEW etc., and clicking **<Next>**, the **Database Server** with the specified name will be created. It is not recommended to change the password for the user SA.



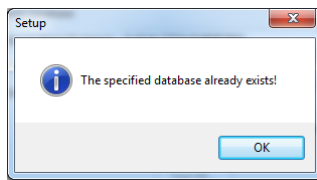
- At the second stage of the custom installation you will be offered to create a database (DB). You may omit the database creation by clicking **<Next>**.

To create a database, you must select the option **Create database** and the database settings will be activated. By default, the installation program offers to create a database named **TOUCHINFORM**.

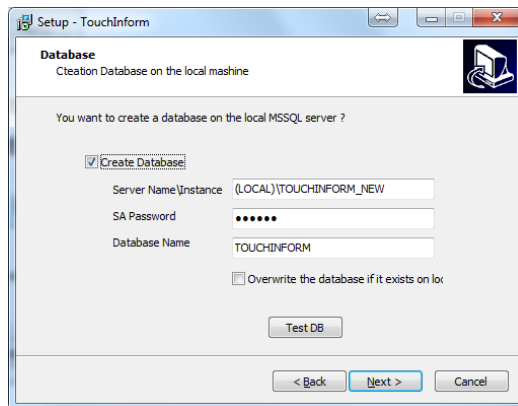


Clicking **<Test DB>** the installation program will check whether the specified instance of the **Database Server** already exists. If the **Database Server** is launched (is running) and the database does not exist on the server, the button **<Next>** becomes active, pressing the button you will continue the installation process.

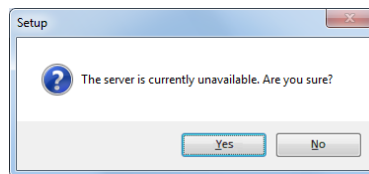
If the database with specified characteristics already exists, a window with the following message appears: **the Specified database already exists!**



The database can be overwritten by selecting **Overwrite the database**.

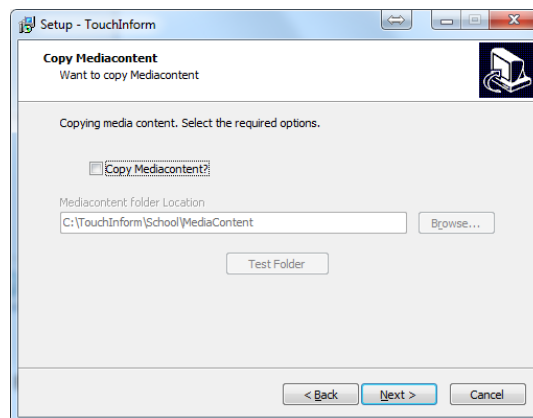


If during the testing process the DB Server is not available or its properties are set incorrectly, a window with the following message appears on the screen: **the Server is currently unavailable. Are you sure?**

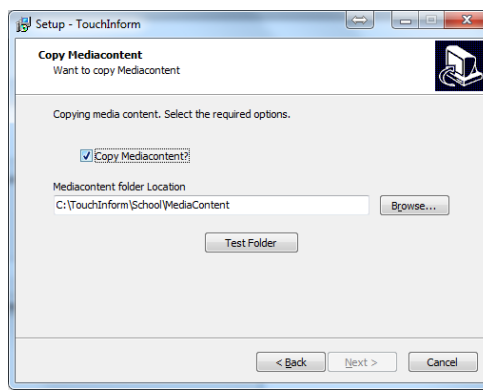
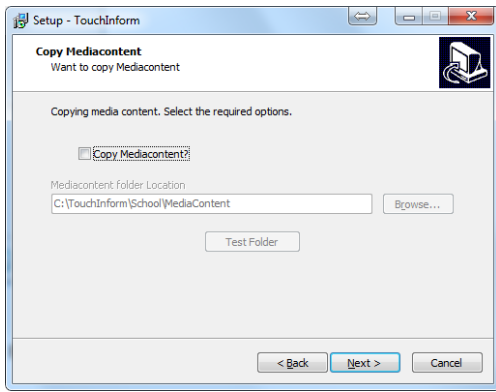


To continue the installation process, click **<Ok>**. Clicking **<No>** you will return to the settings editing.

- At the third stage of the installation process you'll be offered to create a folder with the media content and to copy the media content to the specified folder. You can omit the folder creation and media content copying by clicking **<Next>**.



To create a folder and to copy the media content to it, select **Copy media content**. The fields become active.



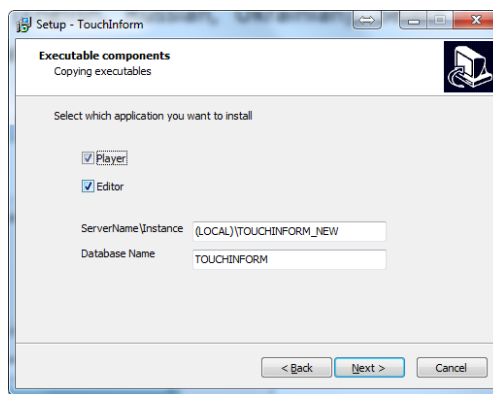
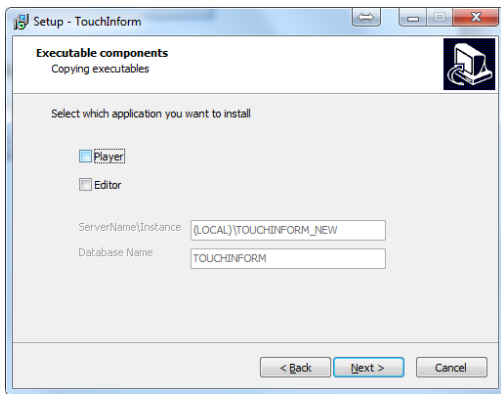
By default the media content folder location is C:\<*the folder name specified in paragraph 3*>\MediaContent. You can specify any other media content folder location, including the available network resources, for example: D:\TouchInform\MediaFolder or [\\Server7\Work\MediaContent](#). You must have appropriate rights for a network resource to record the content.

Clicking <**Test Folder**> the ability to create a specified folder is verified in accordance with the current access rights.

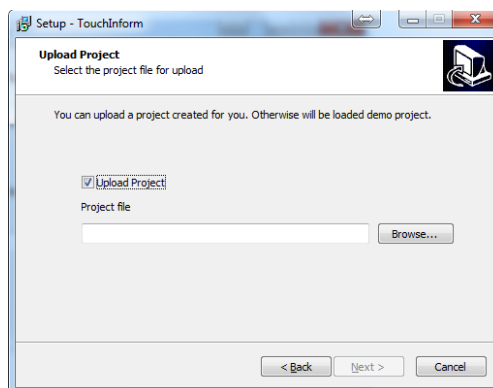
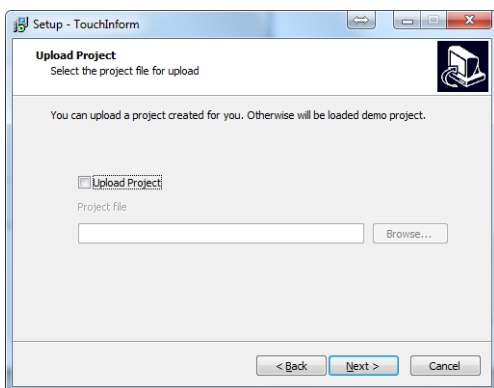
*Please note: If the specified folder with the media content already exists, it will be overwritten and the contained data will be irrevocably lost.*

- At the fourth stage of the installation process you'll be offered to install the Executable components: **Player** and **Editor**. The installation of both Player and Editor can be omitted.

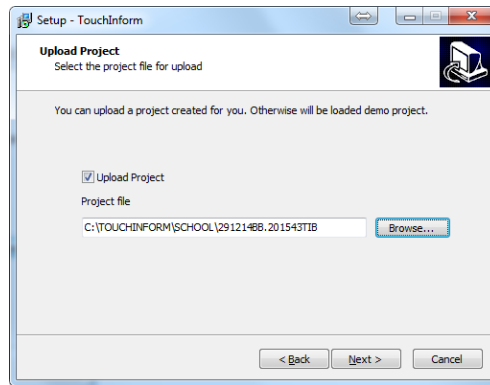
To install Player and Editor select the appropriate options. All the fields and button <**Next**> are activated. Click <**Next**> and proceed to the next installation stage.



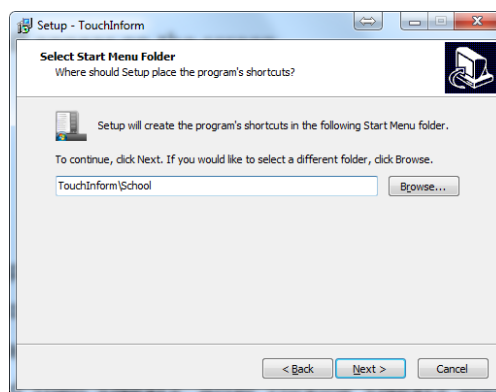
- At the fifth stage of the installation process you'll be offered to download an external project, not included in the distribution package. This stage, as well as the previous ones, can be omitted by clicking <**Next**>.



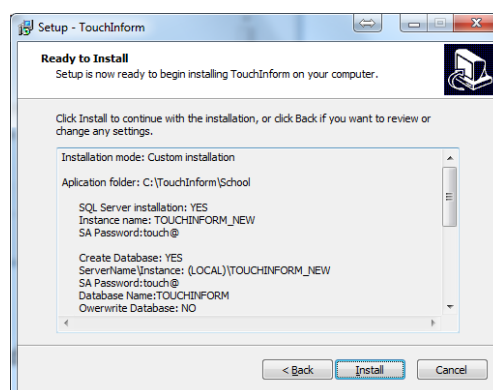
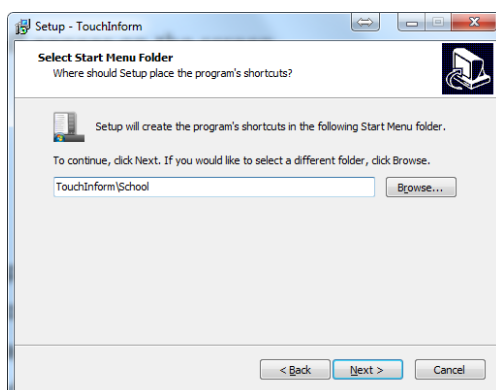
Clicking **<Browse>**, you should specify the file name with the project that you created earlier.



To continue the installation process click **<Next>**, a new window will appear on the screen.



- At the sixth stage of the installation process you'll be offered to specify the folder name, where shortcuts of the Executable software components (Player and Editor) will be located. By default, they will be located in the Windows "start" menu, in the folder TouchInform. If you agree, click **<Next>**, or you can specify a different location folder for the shortcuts, clicking **<Browse>** and then **<Next>**. After clicking **<Next>** you browse to the next window that will display the full list of components, which have been selected for installation earlier.



To continue, Click **<Install>** to continue and wait for the end of the installation process.

*Please note: If you need to adjust the previously selected components that will be installed, you can click **<Back>** and return to any dialogue window of the installation process.*

At the end of the installation process, click **<Finish>**.